

HANSEN'S

Seamless ~~AND~~ Artistic Frock Coat

SYSTEM

TT

595

H24

LIBRARY OF CONGRESS.

Chap. TT 555 Copyright No.

Shelf 124

UNITED STATES OF AMERICA.





HANSEN'S
SEAMLESS ^{and} ARTISTIC
FROCK COAT SYSTEM

A

— METHOD —

WHICH IS

CLEAR, SIMPLE AND COMPLETE

AND

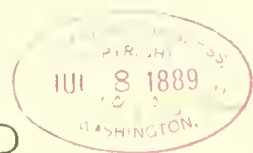
ITS INVOLVING IDEAS HAVE NEVER BEEN
HEARD OR THOUGHT OF BEFORE.

A WORK WHICH HAS BEEN BY CAREFUL STUDY AND PRACTICE
SUCCESSFUL.

ELABORATED

BY H. J. HANSEN

GOSHEN, IND.



1739
A

ENTERED ACCORDING TO ACT OF CONGRESS IN THE YEAR 1889, BY
H. J. HANSEN,
IN THE OFFICE OF THE LIBRARIAN OF CONGRESS AT WASHINGTON, D. C.

CH. 10- 963

Valuable Points

NECESSARY TO STUDY IN ORDER TO BECOME A SUCCESSFUL CUTTER
BY HANSEN'S SEAMLESS AND ARTISTIC
FROCK COAT SYSTEM

For Normal Form take out $\frac{1}{4}$ inch (V), one-eighth Breast distance from 2. Take out $\frac{3}{8}$ inch (V) under the arm running up to Z. For extreme hollow Waist, say if you measure a form 36 Breast and 30 Waist, which is 2 inches out of proportion. In a case of this kind, take out good $\frac{1}{8}$ inch more at front (V), the same amount at (V) running up to Z, and at natural Waist at D.

For Corpulent Form (see Diag. 2) take out but one (V) running up to Z, take out $\frac{1}{4}$ inch instead of $\frac{3}{8}$, and $\frac{1}{4}$ inch at natural Waist instead of $\frac{3}{8}$. Then apply half the waist measure and 2 inches, same as Normal, and make a dot; run a line through that point as at H H to M M. Now come back one inch to R R and run a line from P P through R R to Y Y. This takes away the surplus cloth, which a great many cutters have trouble with in getting their coats too long in front for corpulent forms. Be sure and take Breast, Waist and Upper Shoulder measures correct, as you have to chance to alter your coat around the arm. Be careful and not get the scye too large, rather a little close, until after your coat is tried on. If you think that your form requires a smaller scye than Normal, full up at V and then if necessary to have it larger, cut out after trying on, as this will not interfere with any

other point as long as your Breast measure has been taken accurately. Take the measures over the Vest. Take Breast, Waist and Seat measures just as it is, not too close or too loose; take Upper Shoulder measure quite snug; take Breast measure over the Blade, not under, and let your tape measure meet in front and not behind.

To obtain the correct seat measure, have your customer take everything out of his pockets, then let him put his feet together; now take your seat measure the same way as Breast measure.

Would advise to use any kind of a short measure instrument with which you can obtain the correct short measures necessary; place it under the arm quite snug, then take strap, height of shoulder and blade. To get the height of shoulder, measure down a certain distance, say 6 inches, from top to center of back, and allow $1\frac{1}{2}$ inch for make up.

Do not put in more than three-ply wadding in shoulders, one ply over half way the Breast and around the scye. If more wadding is desired, add on shoulder at M and cut top sleeve a trifle higher. Draw in $\frac{1}{2}$ inch from N N to U U. For long neck or low shoulder, get point C first by dividing between A and B, and 1 and 6 as well; then add, say $\frac{1}{4}$ to $\frac{1}{2}$ inch up from A and square line that much higher from A.

Do not put a plait in the linings over the (V) but cut it out and treat it the same as the outside. A plait should be put in at the back seam.

TABLE OF PROPORTION.

BREAST.	UPPER SHOULDER.	DEPTH OF SCYE.	STRAP.	HEIGHT OF SHOULDER.	BLADE.
30	21 $\frac{3}{4}$	7 $\frac{1}{2}$	10	13	9 $\frac{1}{8}$
31	22 $\frac{1}{2}$	7 $\frac{3}{4}$	10 $\frac{1}{4}$	13 $\frac{1}{4}$	9 $\frac{1}{2}$
32	23 $\frac{1}{4}$	8	10 $\frac{1}{2}$	13 $\frac{1}{2}$	9 $\frac{3}{4}$
33	24	8 $\frac{1}{4}$	10 $\frac{3}{4}$	13 $\frac{3}{4}$	10 $\frac{1}{8}$
34	24 $\frac{3}{4}$	8 $\frac{1}{2}$	11	14	10 $\frac{1}{2}$
35	25 $\frac{1}{2}$	8 $\frac{3}{4}$	11 $\frac{1}{4}$	14 $\frac{1}{4}$	10 $\frac{3}{4}$
36	26 $\frac{1}{4}$	9	11 $\frac{1}{2}$	14 $\frac{1}{2}$	11
37	27	9 $\frac{1}{4}$	11 $\frac{3}{4}$	14 $\frac{3}{4}$	11 $\frac{3}{8}$
38	27 $\frac{3}{4}$	9 $\frac{1}{2}$	12	15	11 $\frac{5}{8}$
39	28 $\frac{1}{2}$	9 $\frac{3}{4}$	12 $\frac{1}{4}$	15 $\frac{1}{4}$	12
40	29 $\frac{1}{4}$	10	12 $\frac{1}{2}$	15 $\frac{1}{2}$	12 $\frac{1}{4}$
41	29 $\frac{5}{8}$	10 $\frac{1}{8}$	12 $\frac{5}{8}$	15 $\frac{5}{8}$	12 $\frac{1}{2}$
42	30	10 $\frac{1}{4}$	12 $\frac{3}{4}$	16	12 $\frac{3}{8}$
43	30 $\frac{3}{8}$	10 $\frac{3}{8}$	12 $\frac{7}{8}$	16 $\frac{3}{8}$	13 $\frac{1}{4}$
44	30 $\frac{3}{4}$	10 $\frac{1}{2}$	13	16 $\frac{3}{4}$	13 $\frac{1}{2}$
45	31 $\frac{1}{8}$	10 $\frac{5}{8}$	13 $\frac{1}{8}$	17	13 $\frac{3}{4}$
46	31 $\frac{1}{2}$	10 $\frac{3}{4}$	13 $\frac{1}{4}$	17 $\frac{3}{8}$	14 $\frac{1}{8}$

❧ Draft for Normal Formfit

(DIAGRAM 1.)

By Nansen's Seamless and Artistic Frock Coat System, Without Plaits.

MEASURES USED.

36 Breast, 32 Waist, 36 Seat.

26 $\frac{1}{4}$ Shoulder, 9 Depth of Seye.

16 $\frac{1}{4}$ Natural Waist.

18 $\frac{1}{4}$ Full length Waist.

32 Full length of Coat.

TO DRAFT.

Square line A 4 and A. K. A to D is Natural Waist. A to K is full length Waist. A to B is one-third Shoulder and $\frac{1}{4}$ inch. C is half way between A and B. I is half way between A and C. 6 is $\frac{1}{2}$ -inch from I. B to P P is one-half Breast and $\frac{1}{4}$ inch. P P to B B is one-fourth Breast. B B to V is one-eighth Breast. V to S S is 1 $\frac{1}{2}$ inch in all cases. Sweep from P P to V V; use B as a pivot. Square up from B B and V. S S to O O is strap measure 11 $\frac{1}{2}$ inches, and 1 inch added for make up, which makes 12 $\frac{1}{2}$ inches. O O to L is one-sixth Breast. L to N is one-sixth Breast. N to 8 is $\frac{1}{2}$ inch. Square out from 8. A to 4 is one-sixth Breast. 4 to T is $\frac{3}{4}$ inch. C to L L is one-third Breast. L L to C C is one-twelfth Breast. C C to W is $\frac{1}{2}$ inch. W to 9 is 1 inch. 9 to G is $\frac{2}{3}$ inch. Shape back part from T to G. L to A A is same distance as from T to G, less $\frac{2}{3}$ inch. A A to M is $\frac{5}{8}$ inch. L to E E is one inch. Shape seye from G to S S and from M to S S. N N to M is 2 $\frac{1}{2}$ inches. U U is one-fourth Breast from W. K to Y is one-eighth Breast. Sweep from Y to Y Y; use E E as a pivot. D to H H is $\frac{1}{2}$ Waist and 2 inches. Draw line from P P through H H to Y Y. From Y Y to front is $\frac{3}{4}$ inch. H H to W W is 1 $\frac{1}{4}$ inches. P P to T T is 1 $\frac{1}{2}$ inch for stitched edge. Now shape front. K to 7 is 1 $\frac{1}{2}$ inch in all cases. Draw line from 7 to Y Y. 7 to E is one-third Breast. E to 2 is $\frac{3}{4}$ inch. Draw line from U U through Z to E. Shape (V) to 2. 2 is $\frac{1}{4}$ inch up from line 7-Y Y, which is to be stretched to meet at bottom. Stretch a trifle at natural Waist at D and prss over half way between K and 2. $\frac{1}{4}$ inch in from K to 5 is 3 $\frac{1}{4}$ inch. 5 to U is 11 $\frac{1}{2}$ inches. Draw line from $\frac{1}{4}$ inch in at K through U to O, which is full length of Coat. Take out $\frac{1}{2}$ inch at Y Y. From top of skirt to S is same distance as from K to O. Now shape front of Skirt. Round the skirt $\frac{1}{2}$ inch from K to O, and press it in to straight line.

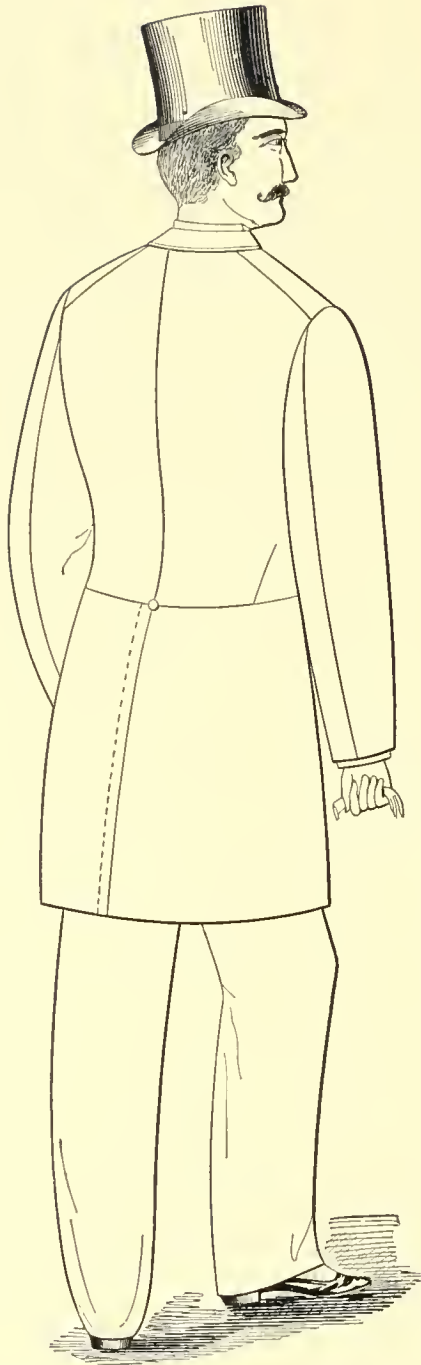


FIG. 1.

D. B. Frock

Fig. 1 on opposite page is showing the back of D. B. Frock, by Hansen's Seamless and Artistic Frock Coat System, without plaits.

The tronsers are also without a side seam by our method, which we had published for the benefit of the trade in two April numbers, 1889, of the American Fashion Review and Tailor's Art Journal, and the American Tailor and Cutter, appearing under the heading of "Fine Trade Design," by the Jno. J. Mitchell Co., publishers, New York.

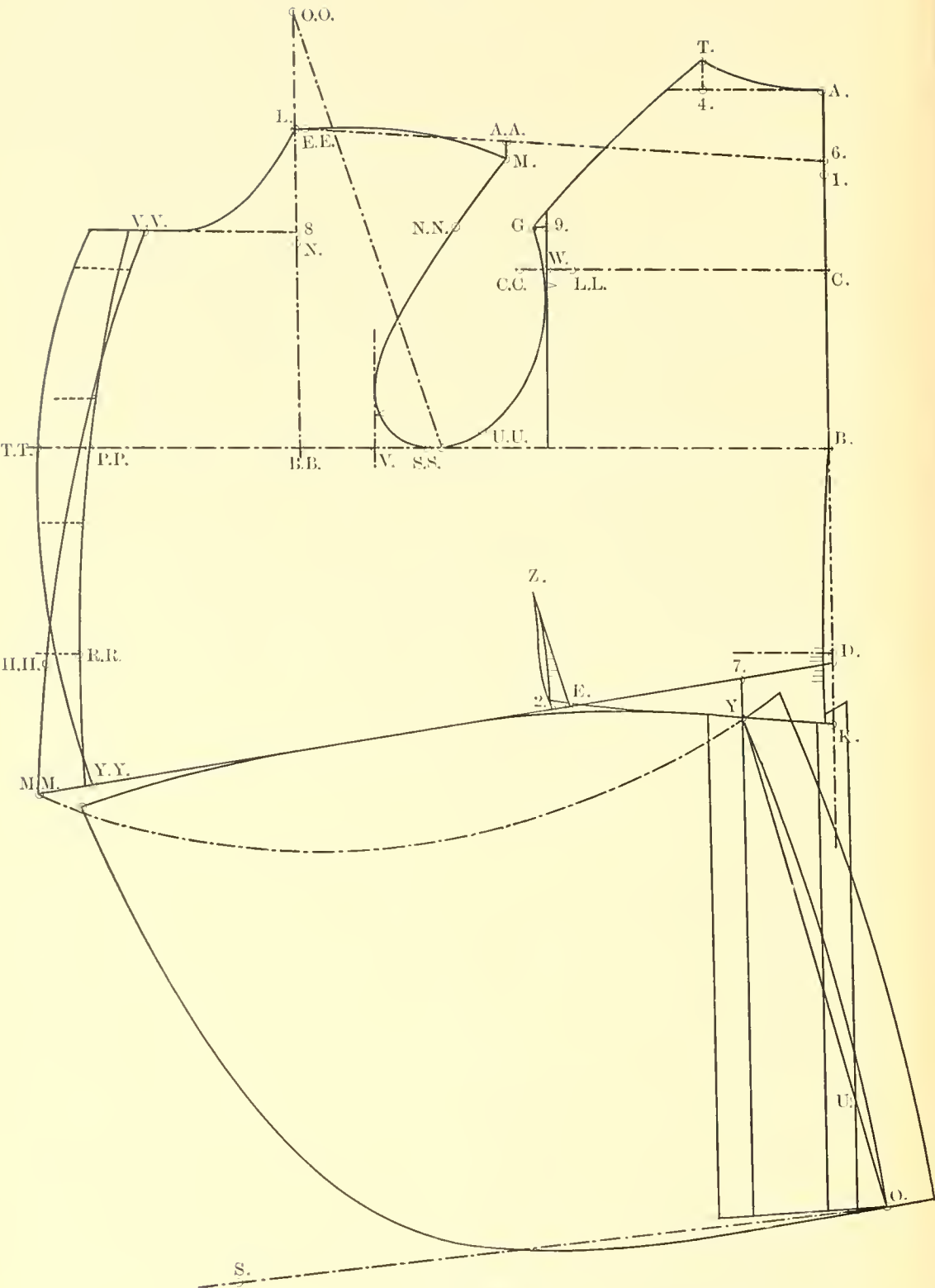


DIAGRAM 2.

Draft for Corpulent Form

(DIAGRAM 2)

By Hansen's Seamless and Artistic Frock Coat System, Without Plaits.

MEASURES USED.

- 44 Breast, 44 Waist, 44 Seat.
 $30\frac{3}{4}$ Shoulder, $10\frac{3}{4}$ Depth of Scye.
 $17\frac{1}{4}$ Natural Waist.
 $19\frac{1}{4}$ Full length Waist.
 $34\frac{1}{2}$ Full length of Coat.

TO DRAFT.

Square line A 4 and A K. A to D is natural Waist. A to K is full length Waist. A to B is one-third Shoulder and $\frac{1}{4}$ inch. C is half way between A and B. I is half way between A and C. G is one-half inch from I. B to P P is one-half Breast and $\frac{1}{4}$ inch. P P to B B is one-fourth Breast, $\frac{1}{2}$ inch. B B to V is one-eighth Breast. V to S S is $1\frac{1}{2}$ inch in all cases. Sweep from P P to V V; use B as a pivot. Square up from B B and at V. Strap measure is $\frac{1}{2}$ inch back of S S up to O O, which is 13 inches, and 1 inch added for make-up, which makes 14 inches. O O to L is one-sixth Breast. L to N is one-sixth Breast. N to S is $\frac{1}{2}$ inch. Square out from S. A to 4 is one-sixth Breast. 4 to T is $\frac{3}{4}$ inch. C to L L is one-third Breast. L L to C C is one-twelfth Breast. C C to W is $\frac{3}{4}$ inch. W to 9 is 1 inch. 9 to G is $\frac{3}{8}$ inch. Shape back part from T to G. L to A A is same distance as from T to G, less $\frac{3}{8}$ inch. A A to M is $\frac{3}{8}$ inch. L to E E is $\frac{1}{2}$ inch. Shape scye from G to S S and from M to S S. N to M is $2\frac{1}{2}$ inches. U U is one-fourth Breast from W. K to Y is one-eighth Breast. Sweep from Y to M M; use E E as a pivot. D to H H is $\frac{1}{2}$ Waist and 2 inches. Draw Fine from V V through H H to M M. H H to R R is 1 inch. P P to T T is $1\frac{1}{2}$ inch for stitched edge. Draw line from P P through R R to Y Y. Now shape front. Y to 7 is $1\frac{1}{2}$ inch in all cases for this style of coat. Draw line from 7 to M M. D to E is one-third Breast. E to 2 is $\frac{3}{4}$ inch. Draw line from U U through Z to E. Shape (V) to 2. 2 is $\frac{1}{4}$ inch up from 7-Y Y-M M, which is to be stretched to meet at bottom. Stretch a trifle at natural Waist at D, and press over half way between K and 2. Y to K is $3\frac{1}{4}$ inches. K to U is $11\frac{1}{2}$ inches. Draw line from Y through U to O, which is full length of coat. Take out one-half inch at Y Y. From top of skirt to S is same distance as from Y to O. Round the skirt one-half inch from Y to O and press it in to a straight line.



FIG. 2.

~ Cutaway Frock Coat ~

Fig. 2 on opposite page is showing the back of a Cutaway Frock Coat by Hansen's Seamless and Artistic Frock Coat System. The trousers are the same as Fig. 1.

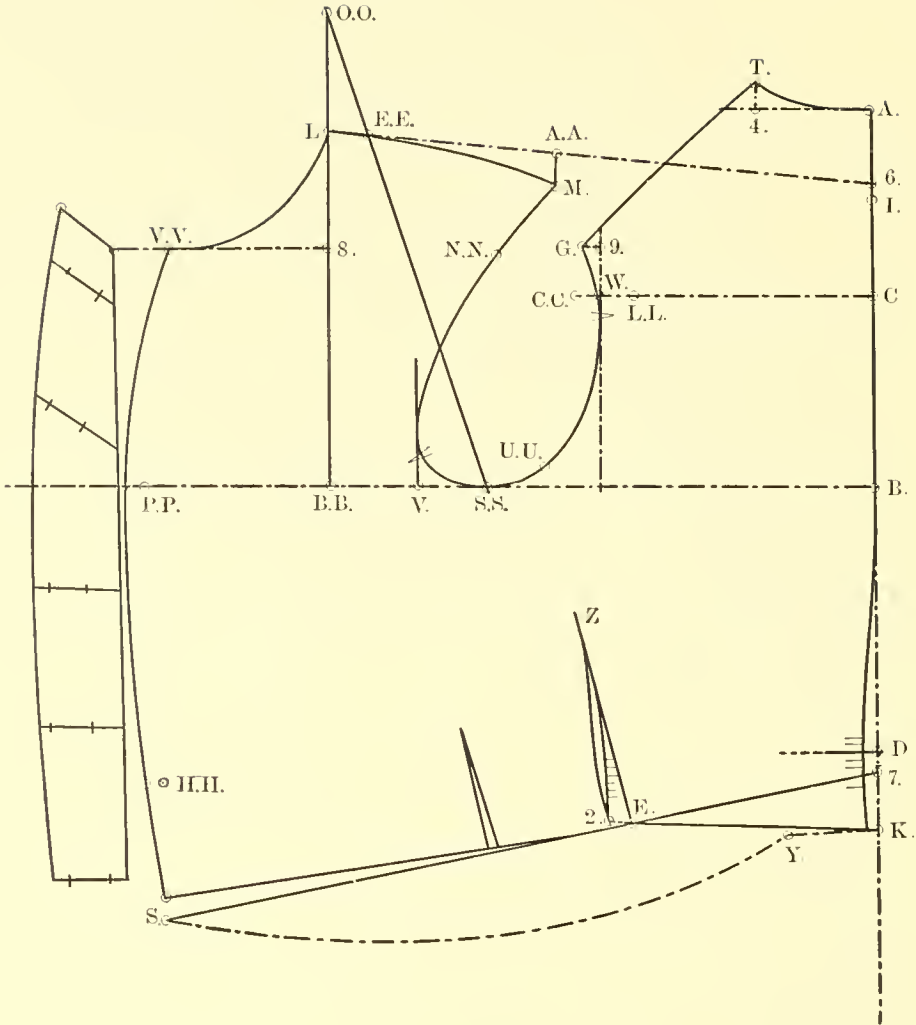


DIAGRAM 3.

Draft for D. B. Frocks

(DIAGRAM 3)

By Hansen's Seamless and Artistic Frock Coat System, Without Plaits.

MEASURES USED.

36 Breast, 32 Waist, 36 Seat.

26½ Shoulder, 9 Depth of Seve.

16½ Natural Waist.

18½ Full length Waist.

TO DRAFT.

Square line A 4 and A, K. A to D is Natural Waist. A to K is full length Waist. A to B is one-third Shoulder and $\frac{1}{4}$ inch. C is half way between A and B. I is half way between A and C. 6 is $\frac{1}{2}$ -inch from I. B to P P is one-half Breast and $\frac{1}{4}$ inch. P P to B B is one-fourth Breast. B B to V is one-eighth Breast. V to S S is $1\frac{1}{2}$ inch in all cases. Sweep $\frac{1}{2}$ inch from P P to V V; use B as a pivot. Square up from B B and V. S S to O O is strap measure $11\frac{1}{2}$ inches, and 1 inch added for make up, which makes $12\frac{1}{2}$ inches. O O to L is one-sixth Breast. L to S is one-sixth Breast. Square out from S. A to 4 is one-sixth Breast. 4 to T is $\frac{3}{4}$ inch. C to L L is one-third Breast. L L to C C is one-twelfth Breast. C C to W is $\frac{1}{2}$ inch. W to 9 is 1 inch. 9 to G is $\frac{3}{4}$ inch. Shape back part from T to G. L to A A is same distance as from T to G, less $\frac{3}{4}$ inch. A A to M is $\frac{5}{8}$ inch. L to E E is one inch. Shape seve from G to S S and from M to S S. N N to M is $2\frac{1}{2}$ inches. U U is one-fourth Breast from W. K to Y is one-eighth Breast. Sweep from Y to S; use E E as a pivot. D to H H is $\frac{1}{2}$ Waist and 2 inches. Draw line $\frac{1}{2}$ inch from P P through $\frac{1}{2}$ inch from H H to S. K to 7 is $1\frac{1}{2}$ inch in all cases. Draw line from 7 to S. Shorten fore part $\frac{1}{2}$ inch at S, for D. B. Frock only. 7 to E is one-third Breast. E to 2 is $\frac{3}{4}$ inch. Draw line from U U through Z to E. Shape (V) to 2. 2 is $\frac{1}{4}$ inch up from line 7-S, which is to be stretched to meet at bottom. Stretch a trifle at natural Waist at D and press over half way between K and 2. Lapell is $2\frac{1}{2}$ inches at center, $2\frac{1}{4}$ inches at bottom, and 2 inches at top.

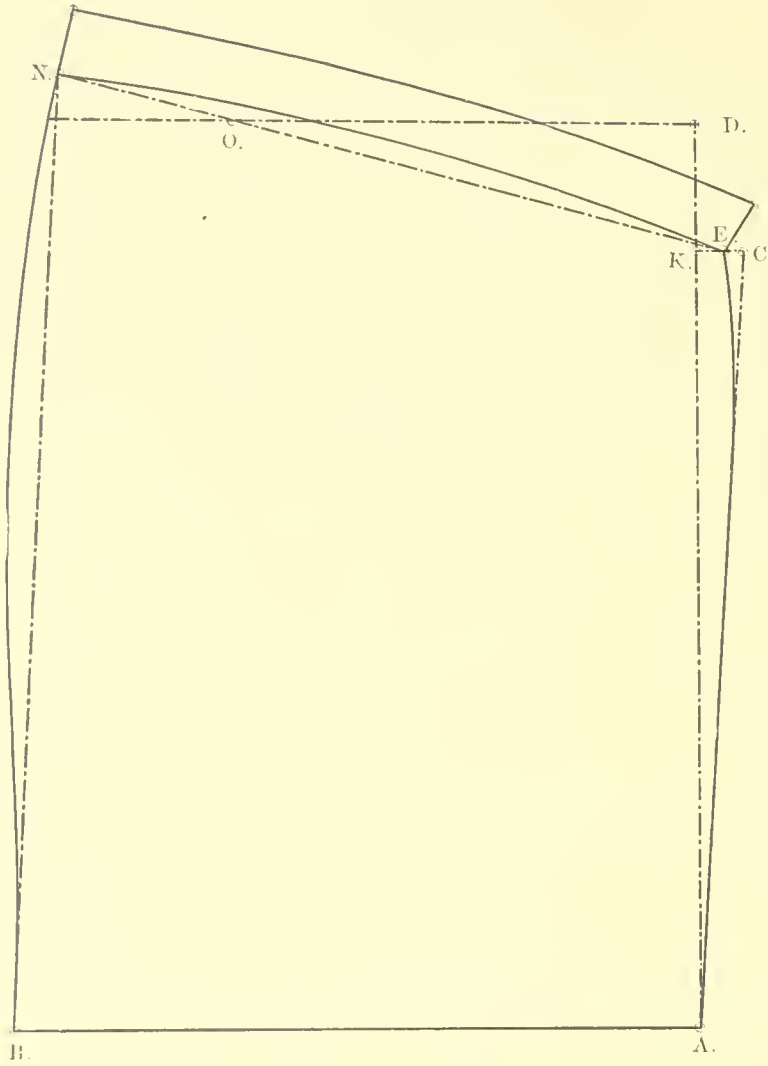


DIAGRAM 1.

Skirt for D. B. Frock Coat

• DIAGRAM 4 •

By Hansen's Seamless and Artistic Frock Coat System, Without Plaits.

TO DRAFT.

Square line A B and A D. A to K is width of bottom of body coat, and add from 1 to $1\frac{1}{2}$ inch for fullness. K to C is $1\frac{1}{4}$ inch in all cases. C to E is $\frac{1}{2}$ inch. Draw line from A to C. Shape top of skirt to E. K to D is $3\frac{1}{4}$ inches. Square down from D to O, which is $11\frac{1}{2}$ inches. Draw line from E through O to N. E to N is same distance as from A to B.

To get the correct width of skirt: First measure bottom of Body Coat; say for 32 waist it measures $17\frac{1}{2}$ inches with the seams, and after it is sewed up it will measure $1\frac{1}{2}$ inch less, which makes 16 inches, then apply the 16 inches on line A D and add from 1 to $1\frac{1}{2}$ inch for fullness, according to goods, and make a dot. Now draft your skirt.

Draft for Dress Coats

(DIAGRAM 5)

By Hansen's Seamless and Artistic Frock Coat System, Without Plaits.

MEASURES USED.

36 Breast, 32 Waist, 36 Seat.
 $26\frac{1}{4}$ Shoulder, $10\frac{3}{4}$ Depth of Scye.
 $16\frac{1}{4}$ Natural Waist.
 $18\frac{1}{4}$ Full length Waist.

TO DRAFT.

Square line A 4 and A K. A to D is natural Waist. A to K is full length Waist. A to B is one-third Shoulder and $\frac{1}{4}$ inch. C is half way between A and B. I is half way between C and A. G is $\frac{1}{2}$ inch from I. B to P P is one-half Breast and $\frac{1}{4}$ inch. P P to B B is one-fourth Breast. B B to V V is one-eighth Breast. V to S S is $1\frac{1}{2}$ inches in all cases. Sweep $\frac{1}{4}$ inch from P P to V V; use B as a pivot. Square up from B B and V. S S to O O is strap measure $11\frac{1}{2}$ inches, and one inch added for make-up, which makes $12\frac{1}{2}$ inches. O O to L is one-sixth Breast. L to S is one-sixth Breast. Square out from S. A to 4 is one-sixth Breast. 4 to T is $\frac{3}{4}$ inch. C to L L is one-third Breast. L L to C C is one-twelfth Breast. C C to W is $\frac{1}{2}$ inch. W to 9 is 1 inch. 9 to G is $\frac{3}{8}$ inch. Shape back part from T to G. L to A A is same distance as from T to G, less $\frac{3}{8}$ inch. L to E E is one inch. A A to M is $\frac{5}{8}$ inch. L to E E is one inch. Shape Scye from G to S S, and from M to S S. N N to M is $2\frac{1}{2}$ inch. U U is one-fourth Breast from W. K to Y is one-eighth Breast. Sweep from Y to N; use E E as a pivot. D to H H is one-half Waist and 2 inches. Draw line $\frac{1}{4}$ inch from P P through $\frac{1}{4}$ inch from H H to N. S is $1\frac{1}{4}$ inch from N. K to 7 is $1\frac{1}{2}$ inch in all cases. Draw line from 7 to N. 7 to E is one-third Breast. E to 2 is $\frac{3}{4}$ inch. Draw line from U U through Z to E. Shape (V) to 2. 2 is $\frac{1}{4}$ inch up from line 7, S and N, which is to be stretched to meet at bottom. Stretch a trifle at natural Waist at D and press over half way between K and 2. The Lapell is $2\frac{1}{2}$ inches at center, $1\frac{1}{2}$ inch at bottom, 2 inches at top, and is $1\frac{1}{2}$ inch longer than from V V to S after the (V) is sewed up and the Breast work in.

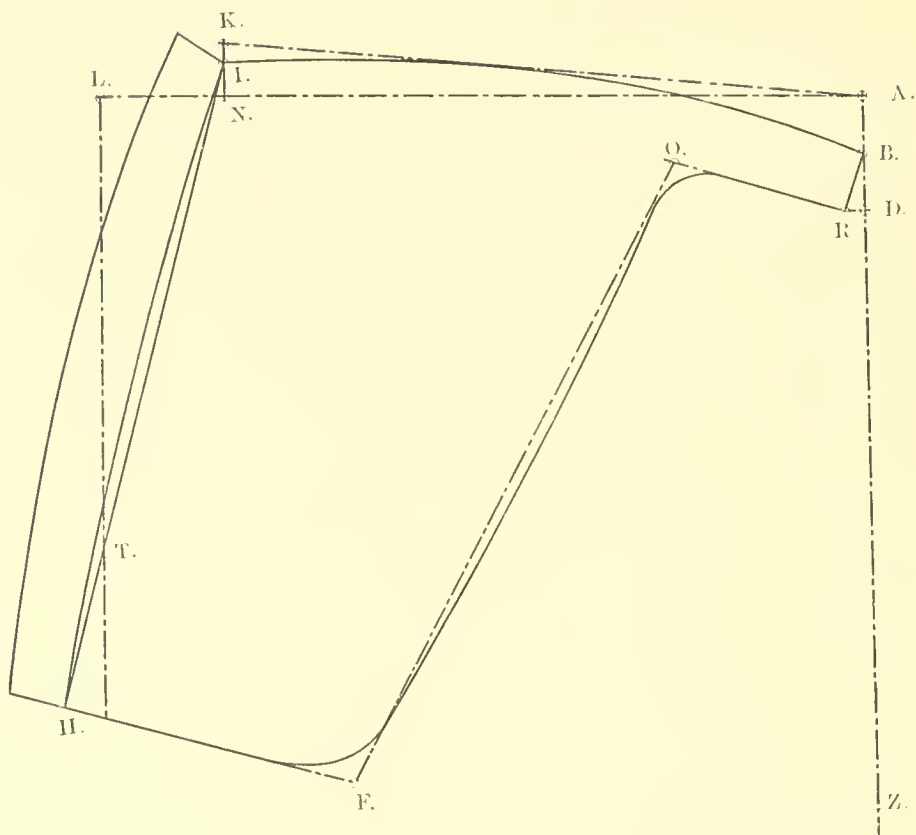


DIAGRAM G.

Skirt for Dress Coats

(DIAGRAM 6)

By Hansen's Seamless and Artistic Frock Coat System, Without Plaits.

Square line A Z and A L. A to N is width of body coat. N to K is $1\frac{1}{4}$ inch. K to I is one-half inch. N to L is $3\frac{1}{4}$ inch. Square line from L to T, which is $11\frac{1}{2}$ inches. Draw line from I through T to H. H to F is one-third Breast and 1-12. A to B is $1\frac{1}{2}$ inch. D to R is $\frac{1}{2}$ inch. R to B is $1\frac{1}{2}$ inch. R to O is one-fourth Breast. Draw line from O to F. Now Shape front, and top of skirt from B to L.

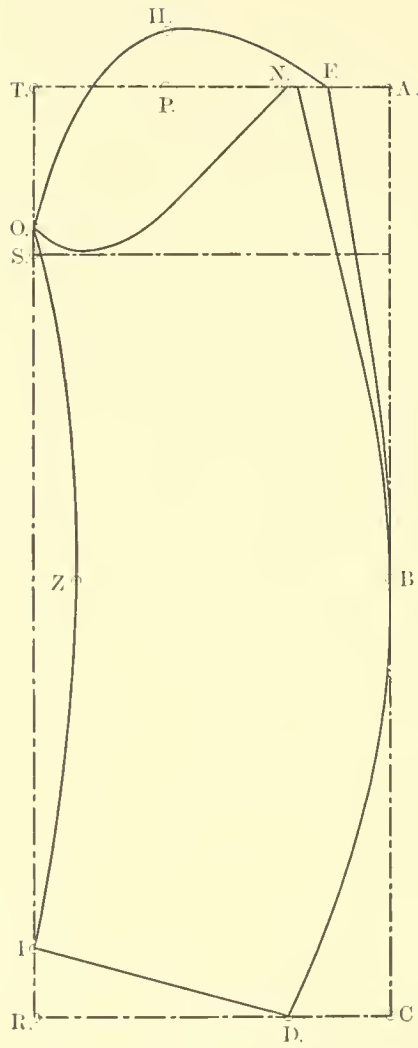


DIAGRAM 7.

Sleeve

(DIAGRAM 7)

For Hansen's Seamless and Artistic Frock Coat.

TO DRAFT.

Square line A C and A T. A to T is one-half; that is, one-half by division of Scye measure, not according to Breast measure. Suppose you cut a coat for a form 44 Breast, half of that would be 22; now your scye is apt to measure not more than 19, so it is one-half and one-sixth by division of scye measure. Square down from T to R. T to O is one-sixth and three-fourths inch. O to S is $\frac{1}{2}$ inch. Square line across from S. T to P is one-sixth. P to H is $1\frac{1}{2}$ inch. Shape under-sleeve from O to N, which is width of under scye from notch to notch and $\frac{1}{2}$ inch. Shape top-sleeve from O through H to F; which is width of top scye, and allow from I to $1\frac{1}{2}$ inch for fullness. A B to D is length of sleeve. Square line across from C to R. R to I is $1\frac{1}{2}$ inch. I to D is $6\frac{1}{2}$ inch. Take out $\frac{3}{4}$ inch at Z or too fancy.

TO MEASURE THE SCYE.

When you make a body draft, say 36 Breast, and according to the proportion measurement, you will find the width of under scye from front notch, which is $\frac{3}{4}$ inch up from V to back part notch, which is $\frac{3}{8}$ inch below W $7\frac{1}{2}$ inches. Add to the $7\frac{1}{2}$ inch $\frac{3}{4}$ inch, which makes the width of under scye $8\frac{1}{4}$ inches. Then apply the $8\frac{1}{4}$ from back notch, measure up to G, and from front notch to M. Now you will find your scye measure 18 inches.

❧ Remarks to Cutters ❧

As some cutters think, a system should work like a machine and turn out a perfect fitting coat every time, whether the measures have been taken correctly or not. A method of that kind has not yet been invented, and in our opinion never will be; this would be just as unreasonable as to expect all men to be the same age, same size, and same weight. If such were the case then it might be possible that one measure taken and applied to the system would produce a perfect fitting garment.

Care should be taken to obtain the correct breast and shoulder measures, which are two very important measures, and in some cases are hard to take. Now suppose you have been getting the breast measure one size too large, which is a mistake the best cutter will make once in a great while, but if a man should get the breast measure either too small or too large more than one size, we would consider him a poor or careless cutter.

If your breast measure has been taken too large, what will be the result? You will either have too much cloth in front or around the arm, or if taken too much out at waist, it will throw up surplus cloth around the scye. If you have too much cloth around the scye, don't think that you will have to cut through your coat from Z on, in order to get away with the surplus, as it will not do; come back one-half inch at L and the same amount at M, this will take away the loose cloth around the scye.

If your coat is too small, leave it out in front, the same at L, and take off at M and cut out your scye the same amount. Now if you have been getting your shoulder measure too long and your coat is too deep in scye, take off say $\frac{1}{4}$ or $\frac{1}{2}$ inch from A to T and from T to G, and lower your back sleeve notch the same amount.

An outlet should be left on top of back, on shoulder from M to N, in front of L, from $1\frac{1}{2}$ inch below N N and in front, say $\frac{3}{4}$ inch. It is necessary for every cutter who wants to be a successful cutter, to have patience with cranks, good judgment, correct measures, and use Hansen's Seamless and Artistic Frock Coat System.





LIBRARY OF CONGRESS



00009485235

